



# *Pitt County Sheriff's Office*

## *Forensic Service's Unit*

---

### **Joint Appropriations Subcommittee on Justice and Public Safety**

- Forensic Unit Capabilities & Stats



# *Pitt County Sheriff's Office*

## *Forensic Service's Unit*

---

### ➤ **Brief History**

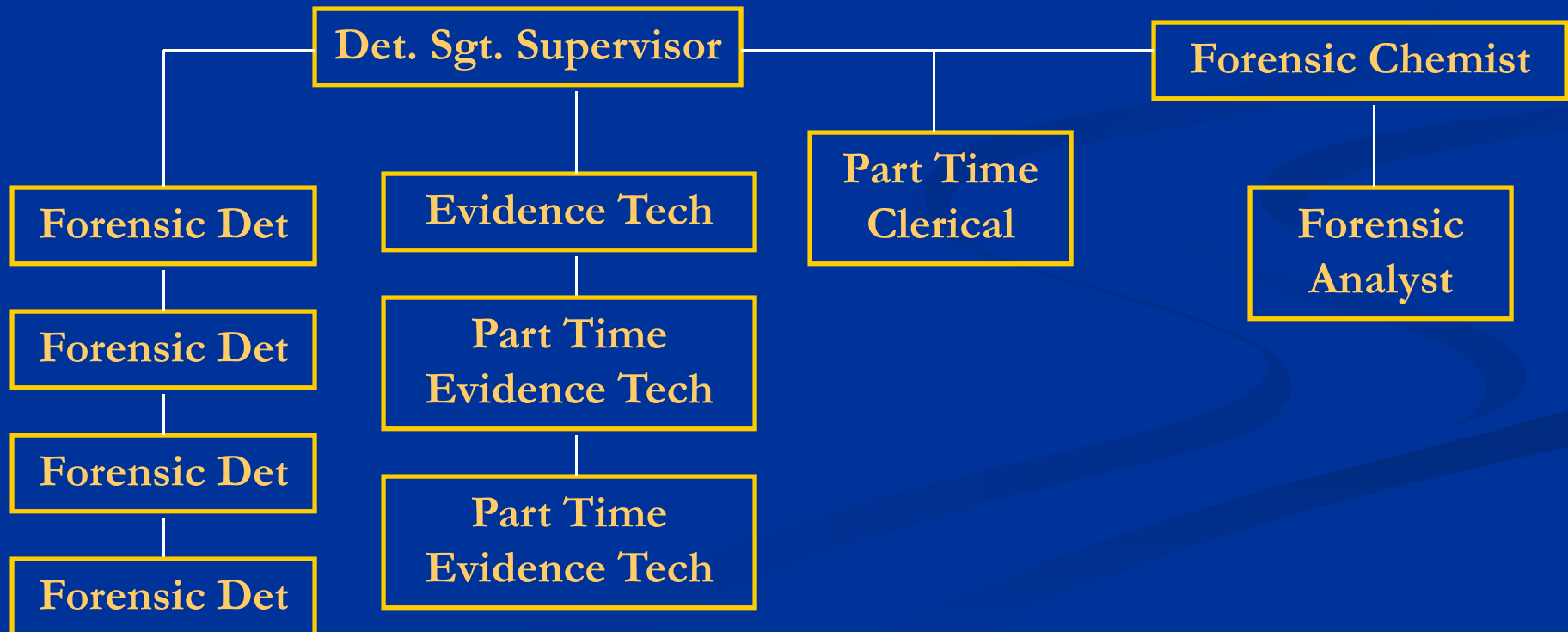
- 1999-Lab construction process begins
- 2001-Crime Lab completed and operational
- 2004-Marijuana testing begins
- 2005-Forensic chemistry program proposed
- 2006-Forensic chemistry program setup
- 2006-Forensic chemistry testing begins



# *Pitt County Sheriff's Office*

## *Forensic Service's Unit*

### Organization Chart





## Forensic Service's Unit

- Crime scene investigation
- Latent print analysis
- Forensic Chemistry
- Forensic video analysis



# *Pitt County Sheriff's Office*

## *Forensic Service's Unit*

---

### ➤ Agencies that we served

#### •Pitt County Agencies

✓ Ayden PD

✓ Bethel PD

✓ ECU PD

✓ Farmville PD

✓ Greenville PD

✓ Grifton PD

✓ PCC PD

✓ PCABC

✓ PC Fire Marshal

✓ Vident PD

✓ Winterville PD

✓ Simpson PD

✓ Fountain PD



# *Pitt County Sheriff's Office*

## *Forensic Service's Unit*

---

### ➤ Agencies that we served

#### •Other Agencies

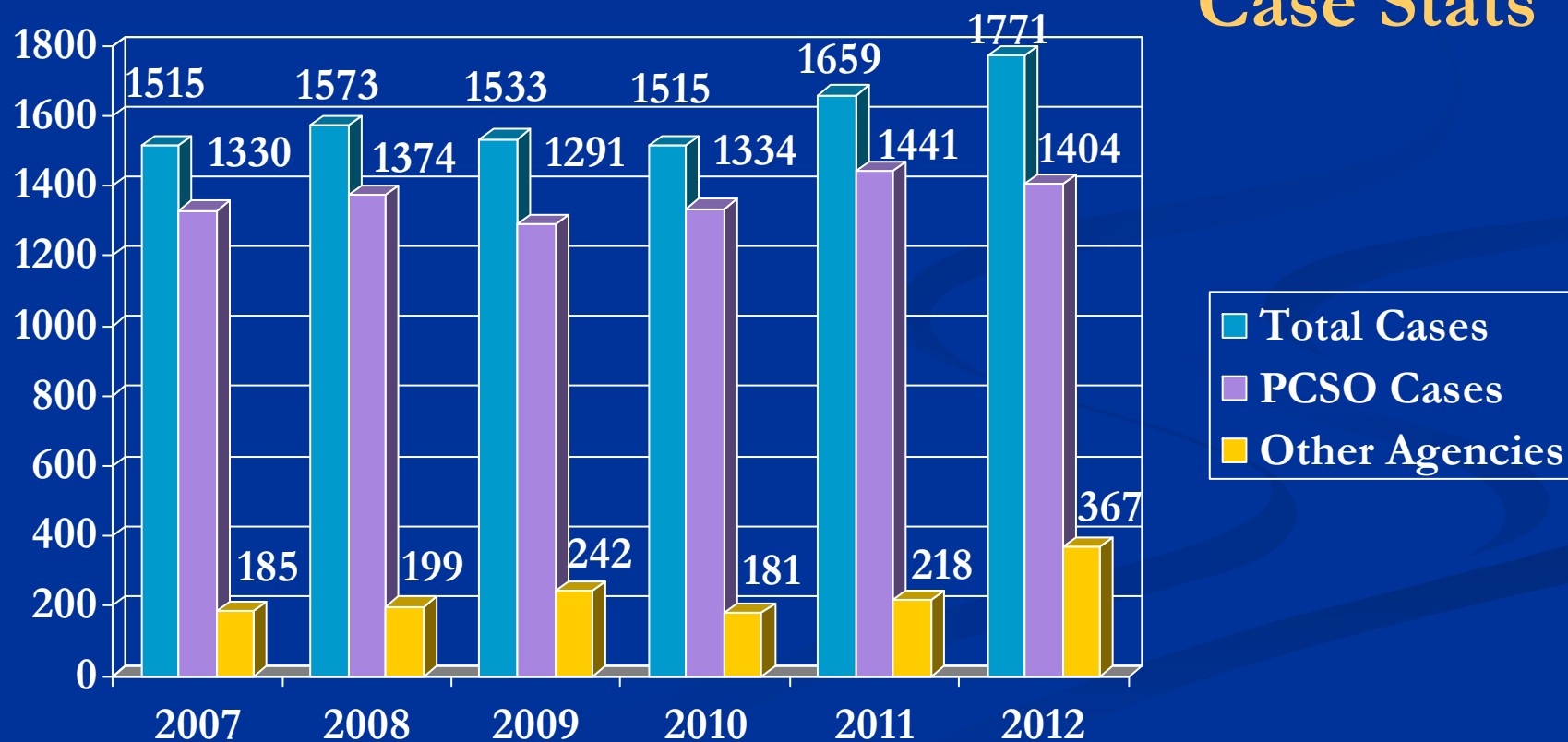
- |                     |               |                     |
|---------------------|---------------|---------------------|
| ✓ ALE               | ✓ ECSO        | ✓ Windsor PD        |
| ✓ NC Wildlife       | ✓ GCSO        | ✓ Jacksonville PD   |
| ✓ NC Highway Patrol | ✓ LCSO        | ✓ Williamston PD    |
| ✓ NC DMV            | ✓ OCSO        | ✓ Roanoke Rapids PD |
| ✓ MCSO              | ✓ DCSO        | ✓ Lewiston PD       |
| ✓ BCSO              | ✓ HCSO        | ✓ Washington PD     |
| ✓ CCSO              | ✓ New Bern PD |                     |



# *Pitt County Sheriff's Office*

## *Forensic Service's Unit*

### Case Stats

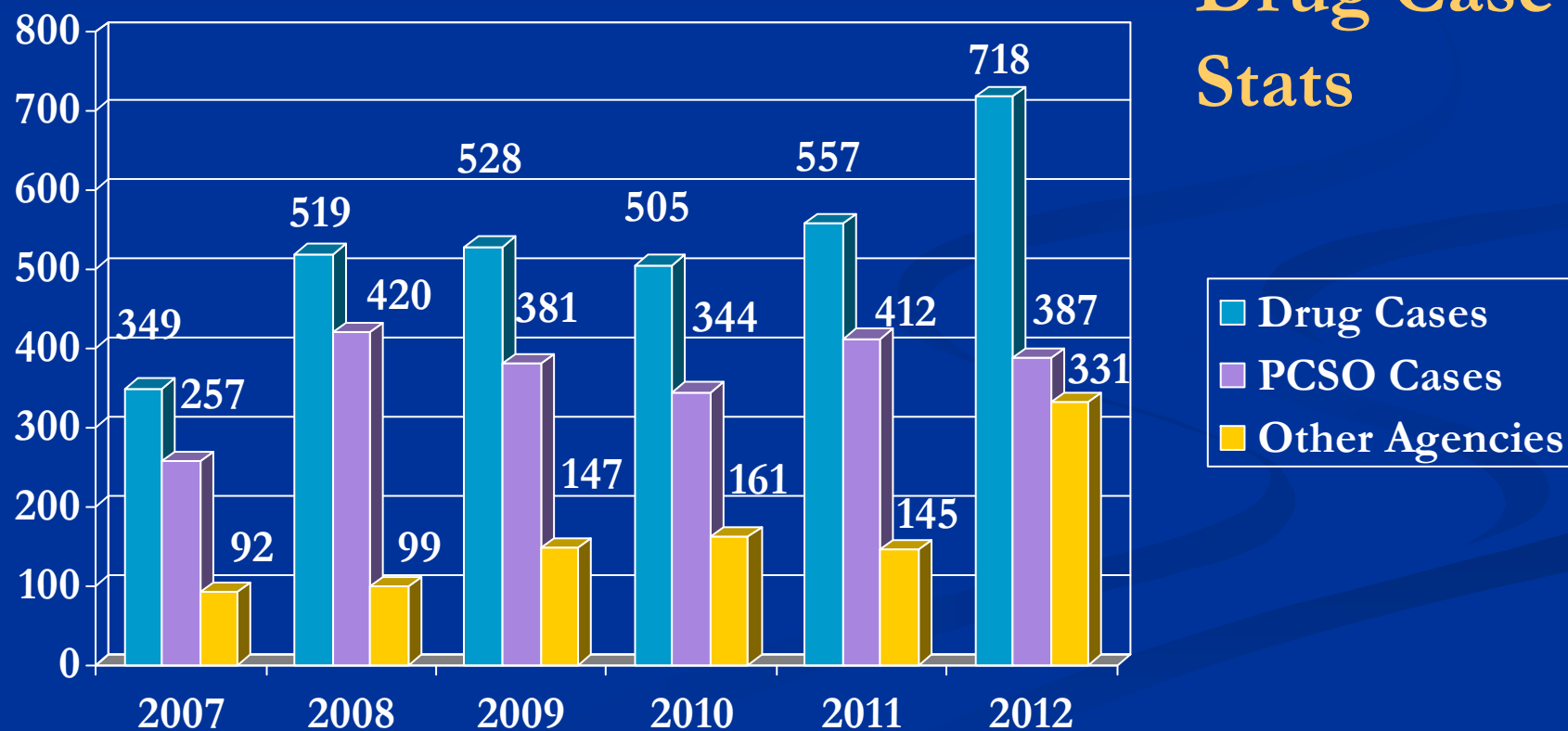




# *Pitt County Sheriff's Office*

## *Forensic Service's Unit*

### Drug Case Stats







# *Pitt County Sheriff's Office*

## *Forensic Service's Unit*

---

➤ Cost of operation minus salaries and benefits

- Maintenance Agreements- \$23,000
- Consumables - \$55,000



# *Pitt County Sheriff's Office*

## *Forensic Service's Unit*

---

➤ Questions Are Welcome